

CLIR[®] TSL

HIGH PERFORMANCE LED SYSTEM



This state-of-the-art LED lighting source features a durable solid-state design in an aluminum powder-coated housing increasing durability. It offers optimal thermal management for system stability, uniform light distribution with "multi-scale lenses", and reduced glare. The ultra-low EMI circuitry minimizes interference, and the Digital Contactor™ smart system enables wireless control while remaining compatible with older mechanical contactors in retrofit applications.

Building healthier, more beautiful communities.

CLIR® TSL

HIGH PERFORMANCE LED SYSTEM

Additionally, the lighting system is pre-aimed and pre-wired with simple bolt on mounting template for ease of installation. Guaranteed light levels provide end users peace of mind with low life-cycle costs and little to no maintenance. Overall, this lighting system is an efficient, durable, and reliable choice for all your sports lighting needs.

FEATURES

HOUSING: Aluminum Powder Coated

VISOR: Standard/Extended

BEAM ANGLE: Narrow/Medium/Wide/
Extra Wide

FIXTURE WEIGHT: 32 lbs

LUMEN OUTPUT: 87,000

CRI: >70Ra

INPUT VOLTAGE: 208-480V

THD: <15%

SURGE PROTECTION: 10kA Current Surge*
*Additional 75 kA protection in remote enclosure

SYSTEM WATTS: 650W

CCT: 5700K

POWER FACTOR: 0.95

OPERATING TEMP: -40°C to +55°C

DRIVER: Integral

EPA: 1.4

IP RATING: IP66

L70 TESTED: >100,000 hours



Advantage!



SPORT LIGHTING DIVISION

A TENCATE COMPANY



ENERGY EFFICIENT



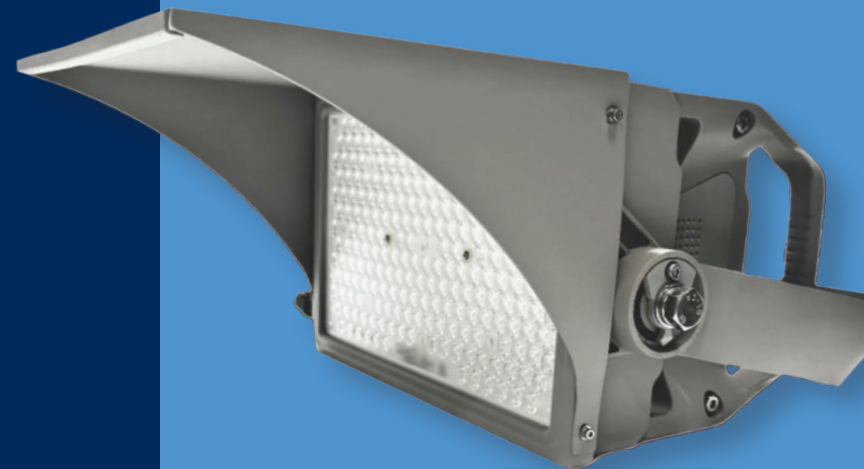
INSTANT ON/OFF



ADVANCED CONTROL OPTIONS



LOW COST OF OWNERSHIP



GEOSPORT®
LIGHTING
A TENCATE COMPANY

