

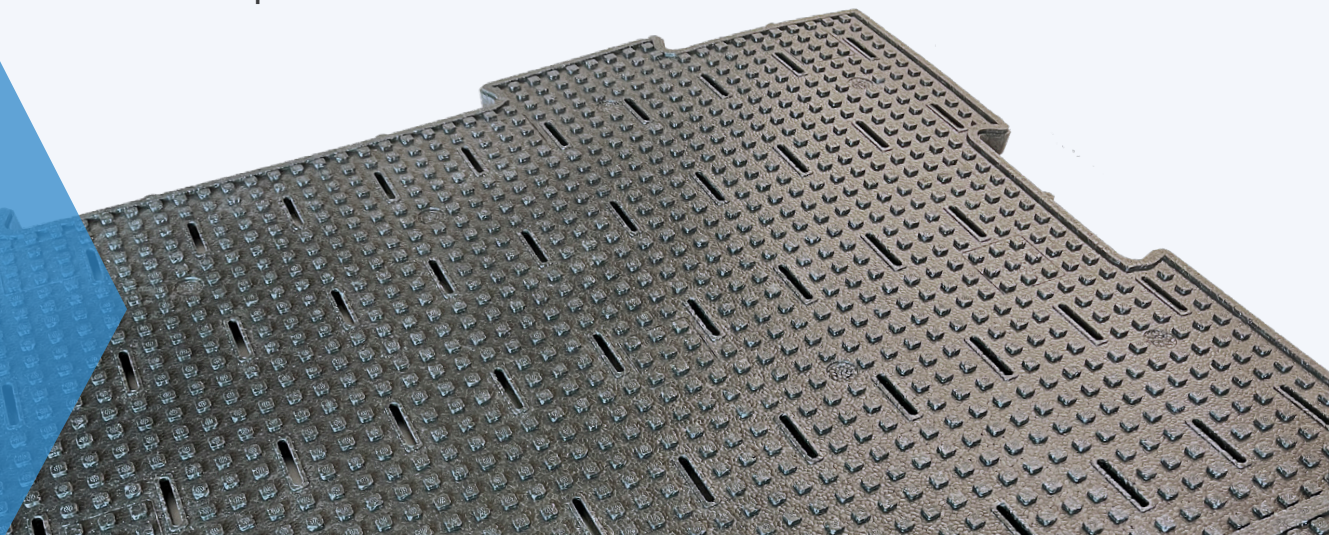
SOTERIA^{MAX}
THE SELF-COOLING PAD

TENCATE

SOTERIA MAX

The SoteriaMax™ pad is named for the Greek goddess of safety and deliverance from harm. The pad's name pays homage to its fundamental mission – to protect athletes on the field with ground breaking engineering.

SoteriaMax reimagines field performance and changes player expectations. Soteria improves impact attenuation, feel underfoot, field temperatures, drainage, and even the installation process.



Building healthier, more beautiful communities.



SOTERIA^{MAX}
THE SELF-COOLING PAD

THICKNESS

20mm (+/- 1mm)

25mm (+/- 1mm)

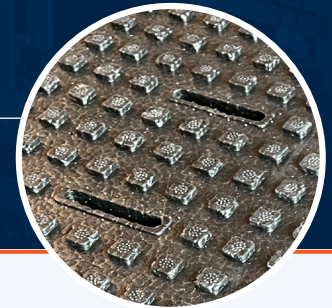
SHOCK ABSORBENCY

66% (+/- 2%)

73% (+/- 2%)

TILE SIZE

47.24" x 31.5"



SOTERIA^{MAX}™ IS THE SELF-COOLING PAD.

Soteria's built-in cooling reservoirs retain optimal water reserves to evaporate up through the turf and augment the work of natural infills. When combined with hydrophilic infill options – which absorb and slowly release moisture – the full synthetic turf system design works in concert to reduce field temperatures.

TECHNICAL CHARACTERISTICS AND MAIN ADVANTAGES

Proven Protection

Property	20 mm	25mm
HIC* (Critical Fall Height)	0.75 m	1.12 m
GMAX*	<116G	<81G
Energy Restitution*	36%	38%

*Results provided by Sports Lab

Evaporating Cooling

Reservoirs hold 0.43 gallons of water per panel*

High Flow Drainage

The SoteriaMax pad's breakthrough design creates effective drainage. Overall, SoteriaMax moves 38% more water per hour than the competition's expanded polypropylene pad.*

Smooth Installation

SoteriaMax's air vents allow greater airflow through the pad. This innovation is critical to improving the field installation process. 300% more vertical airflow.

WITH OUTSTANDING TECHNICAL PERFORMANCE, SOTERIA^{MAX}™ PROVIDES THE BEST VALUE IN THE MARKET FOR EXPANDED POLYPROPYLENE TURF PADS.

